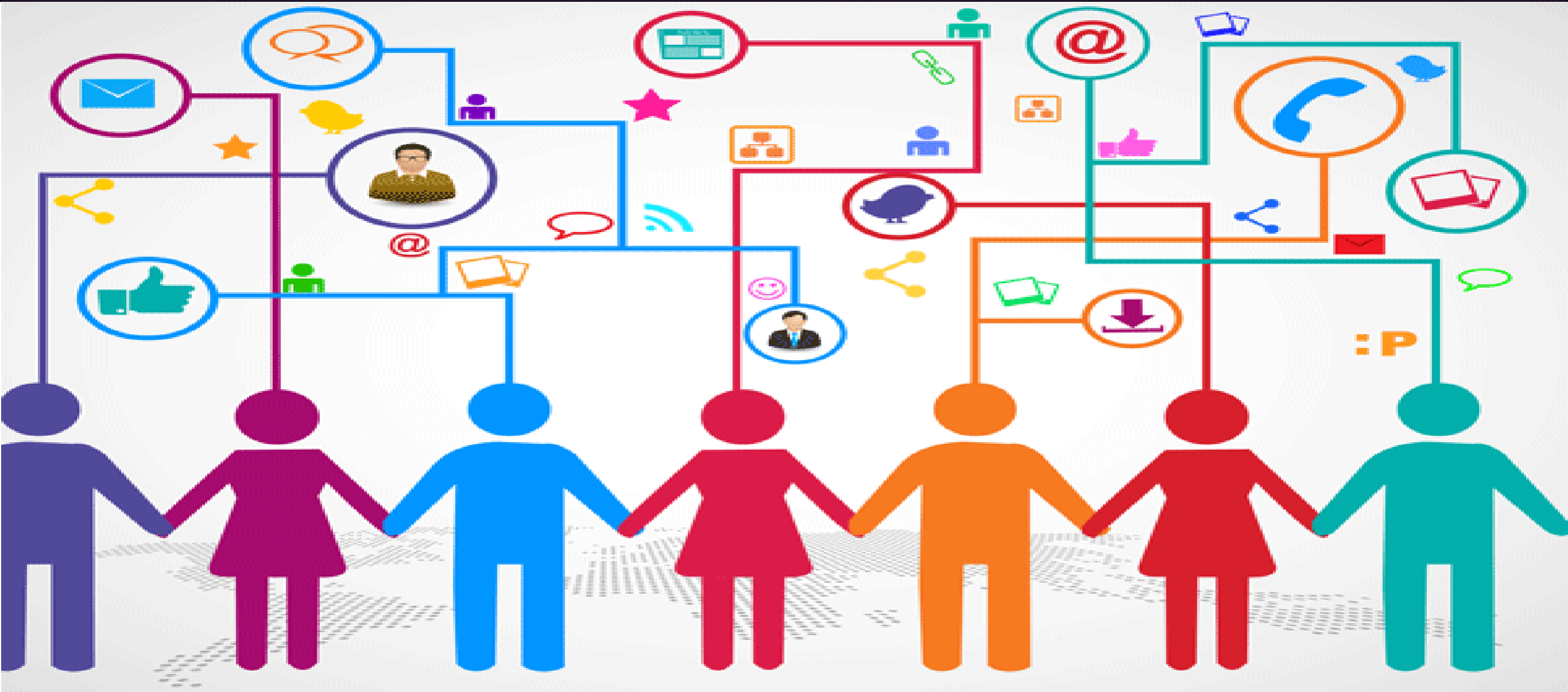


IPPN Member Supports & Services





- E-Scéal
- Mailing Lists
- Professional Guidance Service
- Continuous Professional Development
- IPPN Annual Events
- County Networks
- Support Groups
- IPPN Publications
- Leadership⁺
- Resource Bundles
- Circulars and Policies
- IPPN Web Services
- IPPN Contact Details

IPPN Membership

IPPN is recognised by the DES (DES Circular 0014/2002) as the professional body for primary school principals and the cost of membership subscriptions is recognised as an appropriate charge on school funds.

If you are unsure of your IPPN membership status, please email your membership queries to jennifer.mccarthy@ippn.ie.

[Click here to view Circular 14/2002](#)

Have a Query?

There are various options available to you to check out

IPPN Dashboard

Dashboard is a one-stop-shop to access all IPPN Online services, all education sector information, recent E-scéals, Networking emails, circulars, news, press releases as well as your key system websites.

[Click here to access the Dashboard](#)

www.ippn.ie

This is a members' website that provides a wealth of resources, FAQs, publications, resource bundles, research, information updates and education news, to assist you in the day to day management of your school.

To access to these, please ensure that your school is a current member of IPPN and that you have your log in details.

To receive your username and password to gain access to www.ippn.ie please email Jennifer at jennifer.mccarthy@ippn.ie.

E-scéal

A weekly bulletin email informing you of current issues within education and providing professional guidance - from FAQs on circular releases to announcements about IPPN events and services.

[Click here to view our library of É-scéal](#)

Mailing Lists

IPPN's mailing lists are one of the most informative and immediate supports available to you in your role as school leader, to answer queries encountered on a daily basis.

There is no question too great or small that will not be answered by colleagues, who may have dealt with a similar situation in the past. They are closed mailing lists. This means that the content of the emails are intended for the Principal, Deputy Principal – IPPN members.

networking@ippn.ie

Our networking mailing lists facilitates a peer-support community via email. Everyone in this community receives a copy of any/all emails sent via this special email address. It provides a mutually supportive forum for IPPN members to ask questions, seek advice and share best practice.

advice@ippn.ie

Sensitive, confidential and non-generic comments/queries which are answered only by the mailing list moderators. The moderators are members of our Leadership Advice Panel.

[Click here to read the Terms & Conditions of IPPN Mailing Lists](#)

Professional Guidance

A one-to-one confidential advisory service, providing collegial support and guidance of a non-directive or legal nature from a team of skilled serving and retired principals.



Call 021 482 40 70

Lo-Call 1890 21 22 23
to avail of this service

Newly Appointed Principals

Should you have any queries or require further information on any of the IPPN Supports & Services please contact Jackie O'Reilly who is based at the Support Office.

newprincipals@ippn.ie - Available only to new principals

We have arranged a mailing list specifically for principals appointed in the current school year to give them an opportunity to share experiences and ideas with colleagues in a similar situation. All new principals will be subscribed to it via the Support Office. There is no judgment and no such thing as a 'silly question' – every Principal was Newly Appointed at one point! To get subscribed, email jackie.oreilly@ippn.ie.

Continuous Professional Development

Each year, IPPN hosts national and regional professional development events for school leaders. These offer an opportunity to hear fresh thinking from national and international figures in education, participate in stimulating workshops and network with colleagues.



Regularly check the Events Calendar on the dashboard for details of meetings, conference, courses or any upcoming CPD events. You will also be notified by email or text of national events such as conferences and one-day seminars.

IPPN Annual Events

Annual Principals' Conference

IPPN's Annual Principals' Conference is the flagship event on the IPPN calendar. It is the largest gathering of school leaders in Europe attracting more than 1,000 primary school principals as well as education advocates, Department of Education officials and other education partners. This is a showcase event that combines relevant and up-to-date professional seminars and plenary sessions with nationally and internationally renowned keynote speakers.

The atmosphere of personal and professional development and a focus on networking with fellow principals makes this an unmissable event for primary school leaders. This conference usually takes place towards the end of January and includes a dedicated session for Newly Appointed Principals.

As part of the Annual Principals' Conference, IPPN hosts Education Expo, the largest trade event for schools in Ireland. More than 125 companies exhibit a broad range of products and services from classroom technology to learning resources, school supplies to office equipment and much more. Time well spent at Education Expo saves you several phone calls, emails and calls from sales representatives at other times of the year

Deputy Principals' Conference

IPPN's Annual Deputy Principals' Conference usually takes place in mid to late May each year. It attracts over 500 deputy principals as well as education advocates, Department of Education officials and other education partners.

The event combines the Education Expo, with nationally and internationally renowned keynote speakers, professional seminars and plenary sessions. This event is highly recommended for Deputy Principals. Principals may attend with their Deputy Principal if they so wish.

Ciall Ceannaithe Online

Ciall Ceannaithe is an online summer course, a highly practical step-by-step course built on the collective wisdom and experience of seasoned principals. The course is designed to professionally support Newly Appointed Principals through the first day, first week, first month and first year of their Principalship. It is also very suitable for teachers and deputy principals who wish to one day undertake the role of principal or as a refresher course for experienced principals who wish to reflect on their current practice.



[Click here to view the course aims of Ciall Ceannaithe](#)

Headstart

In August, IPPN facilitates an induction day for new school leaders. This event is designed to prepare new principals (acting/permanent) for the first week, month and term of their appointment and open to those appointed after January 1st.

This induction day is facilitated as part of your school's membership of IPPN and does not present any additional charge for attendance.

[Click here for full event information](#)

County Networks

There are 26 IPPN County Networks that are driven and led by a committee of members from within their own counties. County Network Meetings are open to Principals and Deputy Principals. Typically, County Networks meet once a term or three times a year. County Network meetings are organised by the local committee and are funded through IPPN.

County Network meetings are the life blood of the IPPN network. Your first IPPN County Network Meeting will take during the months of September and October. As these meetings will address issues of current interest and provide support and information for principals, it would be important to attend. A full list of dates etc will be available on the Events Calendar on the IPPN Dashboard.

Local Support Groups

Local Support Groups have proven to be the most effective form of support available to principals and deputy principals. Local Support Group meetings are the only meetings that will actually relieve your workload. You will have nothing to prepare before the meeting, you are not 'performing' at the meeting and you will not leave with a 'To Do' list. You will, however, leave the meeting feeling genuinely supported.

[Click here to view the most commonly shared characteristics of successful Local Principals'](#)

Watch this short film by Catriona O'Reilly, Principal, Our Lady of Good Counsel School, Ferrybank, Waterford on her experience as a Support Group member.

['Principals' Local Support Groups – Why I'm a believer'](#)

Don't wait; join your Local Support Group.

Email jennifer.mccarthy@ippn.ie and Jennifer will pass your details on to the Support Group Organiser for your county. However, not all counties have active Support Groups so you may consider starting one yourself?

IPPN Publications

Publications that have been written or commissioned by IPPN as. Each publication is available as a download

[Click here to view all IPPN Publications](#)

IPPN Submission Papers

IPPN has made submissions to the DES and other organisations on a range of issues relating to Primary Education.

[Click here to view all IPPN Submissions](#)

Leadership+

The journal for Principals and Deputy Principals

An invaluable magazine which is issued to members twice per school term. Leadership+ offers a wide range of articles of relevance to school leaders, including practical hints and tips, professional guidance, research summaries, information on new procedures and forthcoming events, to name just a few.



[Click here to view Leadership+](#)

Resource Bundles

IPPN Resources Bundles are a one-stop-shop where you will find the answers, supporting documentation and reading materials relating to the most common queries principals encounter in the day-to-day management of their schools. This comprehensive new resource, is produced in an easy-to-use, interactive e-publication format.

[Click here to view IPPN Resource bundles](#)

Circulars and Policies

Need a Circular?

Check IPPN Dashboard for all new circulars issued by the Department of Education & Skills. Also available on www.ippn.ie – Under the heading ‘Resources’, select ‘DES Circulars’ from the drop down menu.

[Click here to view DES Circulars](#)

Need a sample policy or Plan?

Check under www.ippn.ie - Under the heading ‘Resources’, select ‘School Policies’ from the drop down menu.

IPPN Web Services

The following services are owned and operated by IPPN. These were designed by principals for principals and were specifically established to reduce the associated administrative and cost burden on schools.



TextaParent

A simple online texting system. This online group texting service enables you to instantly communicate with staff, board and parent body. More than 2,200 schools in Ireland use this service regularly.

TextaParent.ie is not a commercial, for-profit company. All revenue generated is invested into developing supports & services for school leaders.

If you wish to start using your TextaParent.ie account visit www.textaparent.ie and register your school or email info@textaparent.ie for more information.

Contact: 1890 401 501

Email: info@textaparent.ie

[Click here for TextaParent.ie FAQs](#)



EducationPosts.ie incorporating TextaSub

To alleviate the burden of costs associated with newspaper advertising, IPPN developed EducationPosts.ie where schools can advertise vacancies for free. EducationPosts.ie is the number one choice for schools advertising vacancies. Thousands of teachers use EducationPosts.ie in their search for work.

The advertising of available and required clustering hours is facilitated on www.Education-Posts.ie. To access this service, go to the 'Advertise a Post' tab on the menu tool bar and scroll and click through to 'SEN Clustering Notice Board'.

Queries online only to: info@educationposts.ie

[Click here for EducationPosts.ie FAQs](#)



TextaSub is an online service that enables you to send free text alerts to primary qualified teachers that are available for subbing work in your county. Teachers are required to supply a valid Teaching Council number in order to register for TextaSub.

Fill out your substitute vacancy requirement and TextaSub will instantly text qualified teachers available for work in your county who in turn will contact you. TextaSub is a free service to IPPN members.



**IPPN National Support Office
Glounthaune
Co Cork
T45 D544**

**IPPN
Lo-Call: 1890 21 22 23
T: 021 480 40 70
E: info@ippn.ie**

**TextaParent
Lo-Call: 1890 401 501
E: info@textaparent.ie**

**EducationPosts
Online Only: info@educationposts.ie**