

LEGEND

- Wheelchair accessible facilities
- Illuminated Pictogram Exit Sign

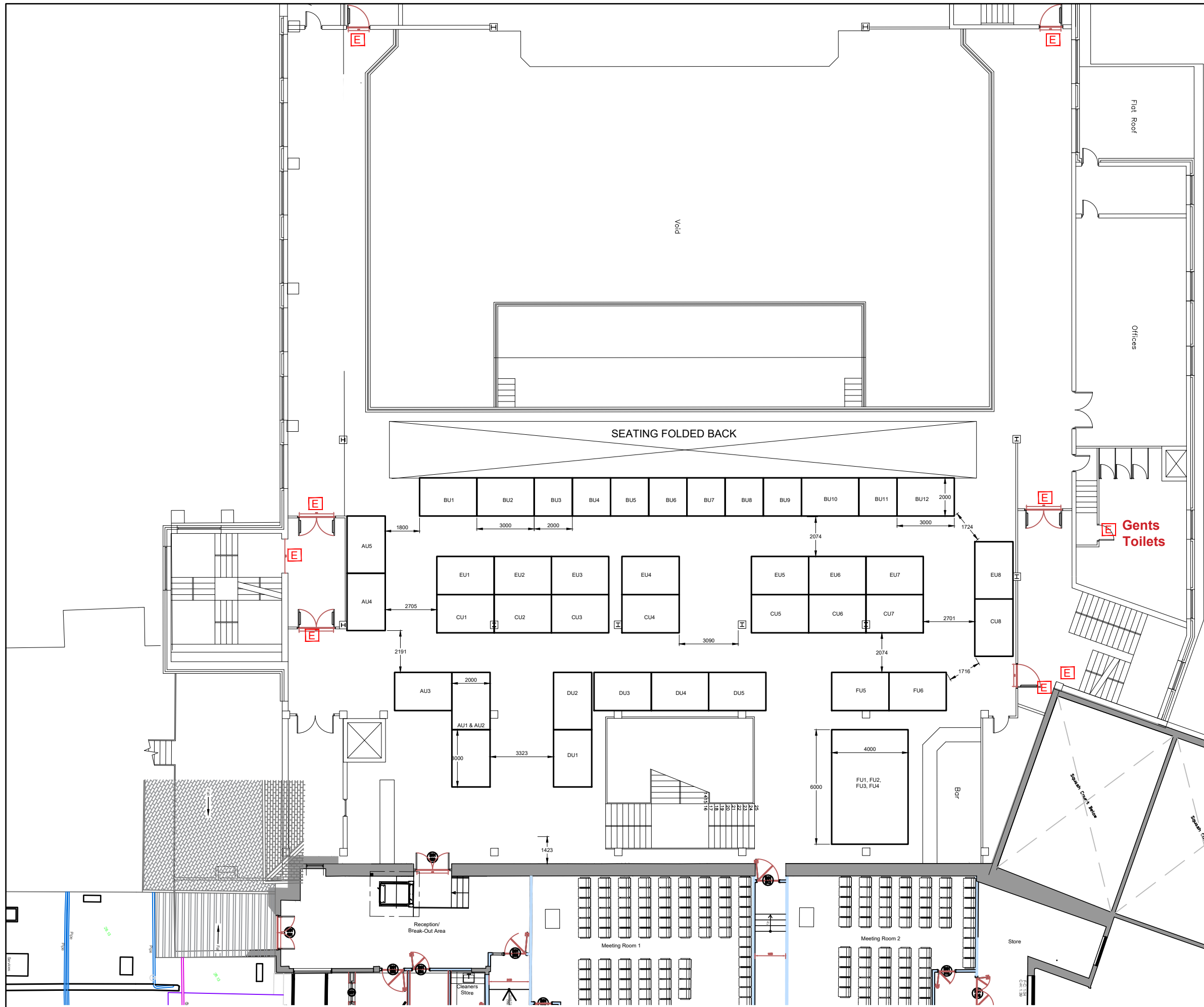
DESCRIPTION	DATE	ISSUE
Edits to stand layout	19/06/22	D6
Edits to stand layout	15/06/22	D5
Annotation to stands	09/06/22	D4
Edits to stand layout	31/05/22	D3
Edits to stand layout	23/05/22	D2
Discussion	23/05/22	D1

E: info@corex.ie
W: www.corex.ie
T: +353 66 9793541



Ground Floor Plan INEC - Stand Layout
1:250

IPPN Conference

CLIENT Irish Primary Principals Network	DRAWING INEC Ground Floor Plan Stands Layout
PROJECT IPPN Conference 2022	PROJECT ARCHITECT PAULA KELLEHER
SITE INEC, Muckross Rd, Kilarney	SCALE 1:250@A3 @A3
PROJ. NO. STATUS DWG. NO. ISSUE 22103 - DES - 000-001 D6	<p><small>THIS DRAWING IS COPYRIGHT. NO PART OF THIS DOCUMENT MAY BE REPRODUCED OR TRANSMITTED IN ANY FORM OR STORED IN ANY RETRIEVAL SYSTEM OF ANY NATURE WITHOUT THE WRITTEN PERMISSION OF THE ARCHITECT AS COPYRIGHT HOLDER EXCEPT AS AGREED FOR USE ON THE PROJECT FOR WHICH THE DOCUMENT WAS ORIGINALLY ISSUED.</small></p>



LEGEND

-  Wheelchair accessible facilities
-  Illuminated Pictogram Exit Sign

DESCRIPTION	DATE	ISSUE
Edits to stand layout	16/06/22	D6
Edits to stand layout	15/06/22	D5
Annotation to stands	09/06/22	D4
Edits to stand layout	31/05/22	D3
Edits to stand layout	23/05/22	D2
Discussion	23/05/22	D1

COREX Consultancy Ltd
 E: info@corex.ie
 W: www.corex.ie
 T: +353 66 9793541

RIAI Practice Member 2022

CLIENT Irish Primary Principals Network	DRAWING INEC First Floor Plan Stands Layout
PROJECT IPPN Conference 2022	PROJECT ARCHITECT PAULA KELLEHER
SITE INEC, Muckross Rd, Killarney	SCALE 1:200@A3 @A3
PROJ. NO. 22103	STATUS DES
DWG. NO. 000-002	ISSUE D6

THIS DRAWING IS COPYRIGHT. NO PART OF THIS DOCUMENT MAY BE REPRODUCED OR TRANSMITTED IN ANY FORM OR STORED IN ANY RETRIEVAL SYSTEM OF ANY NATURE WITHOUT THE WRITTEN PERMISSION OF THE ARCHITECT AS COPYRIGHT HOLDER EXCEPT AS AGREED FOR USE ON THE PROJECT FOR WHICH THE DOCUMENT WAS ORIGINALLY ISSUED.

First Floor Plan INEC - Stands Layout
1:200

IPPN Conference